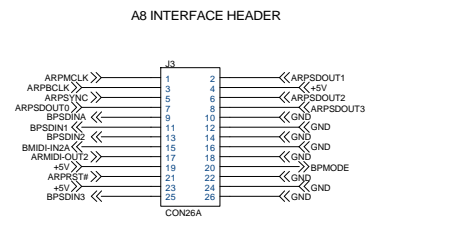
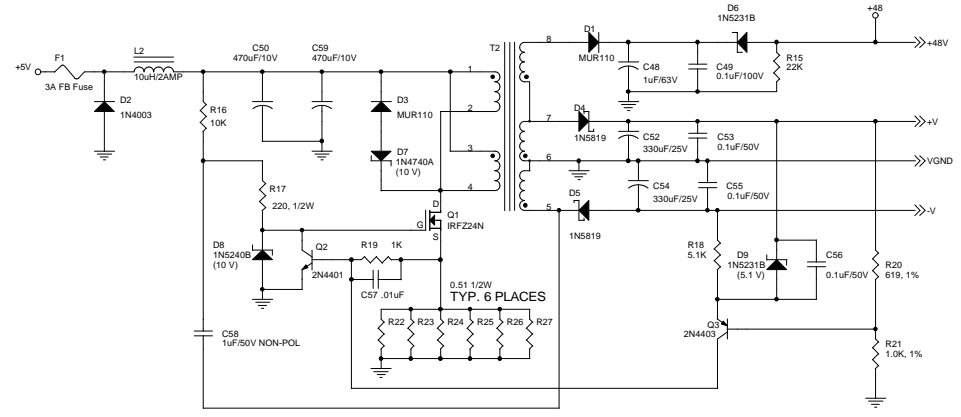
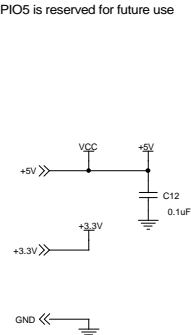


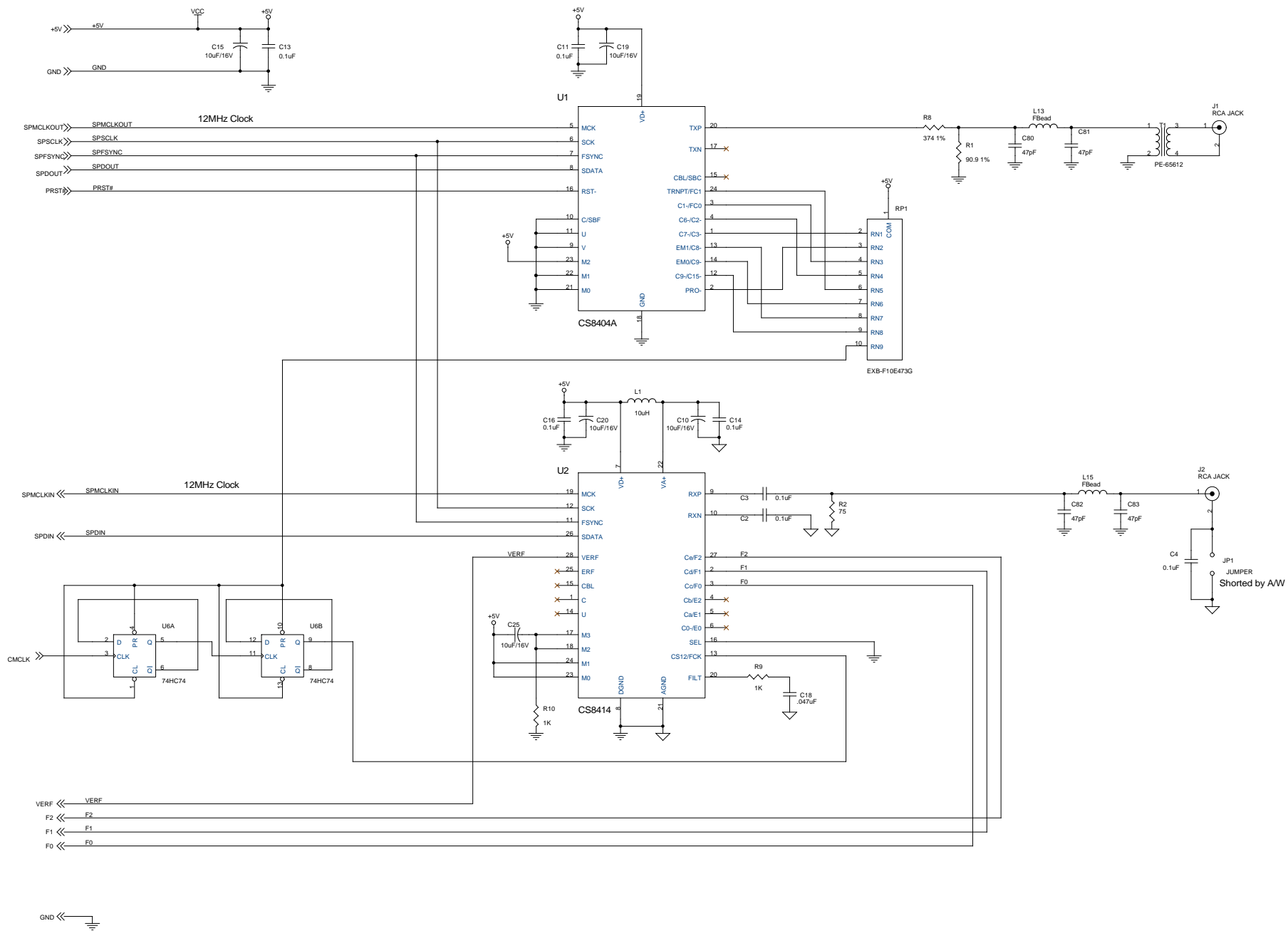
GPIO1 selects Solo or A8 as source for MIDI-IN2
 as source for MIDI-IN2

GPIO2 selects phase of PBCLK for MIDI-OUT synchronization

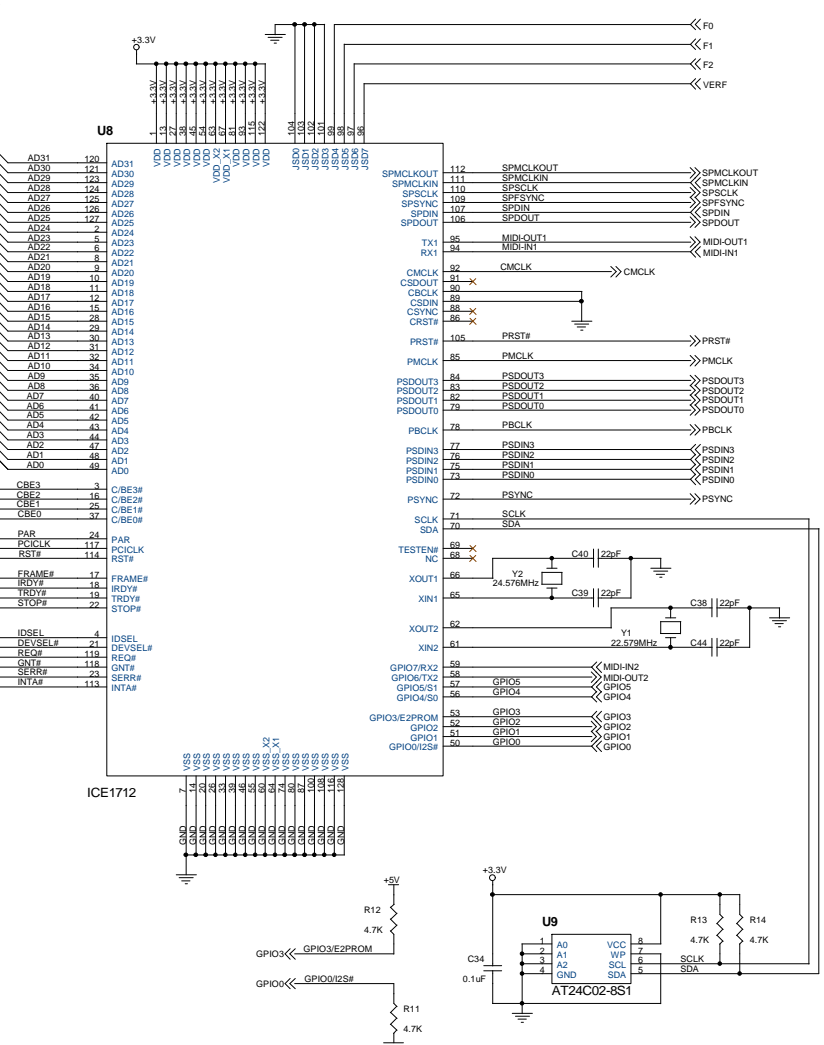
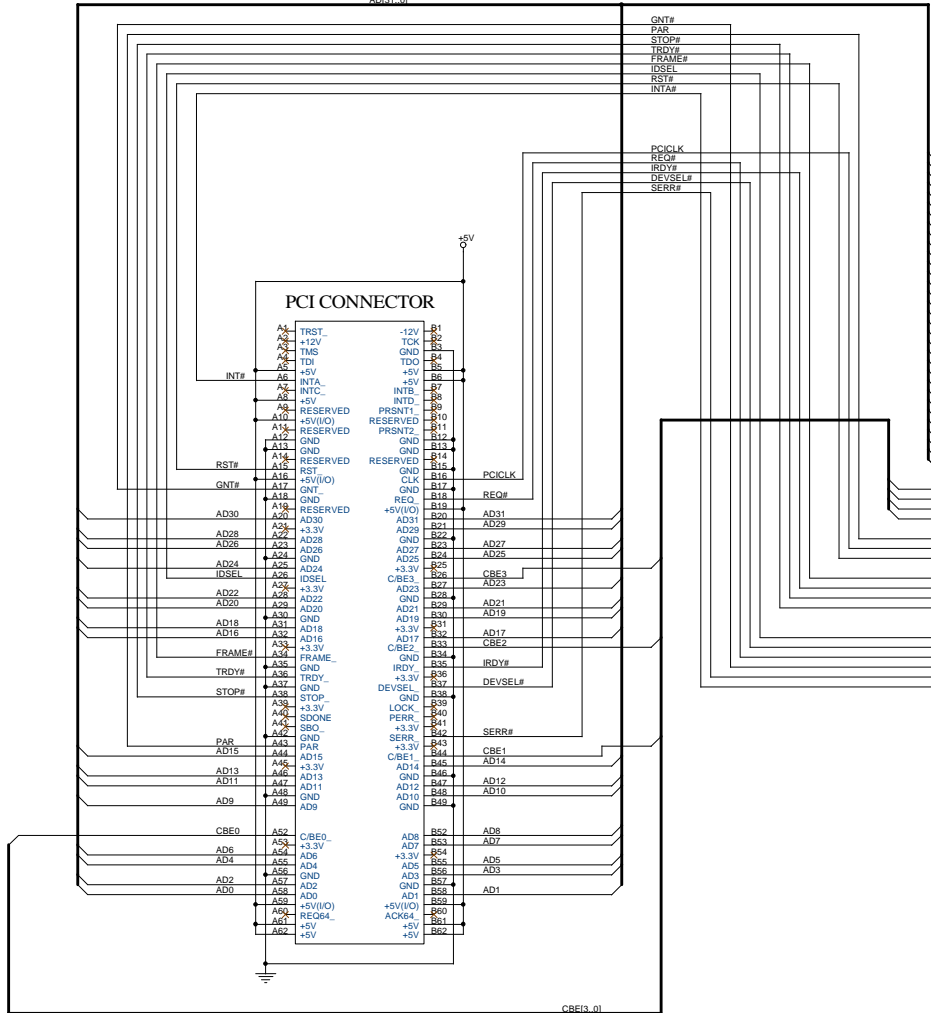
GPIO4 is the buffered PMODE signal
 Indicates input source for channels 1 & 2 audio
 (0=Solo; 1=A8)

GPIO5 is reserved for future use

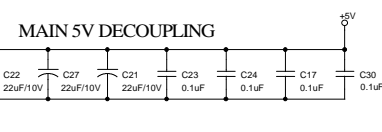
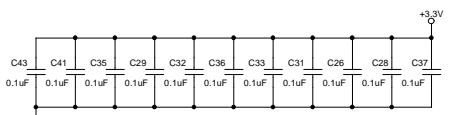




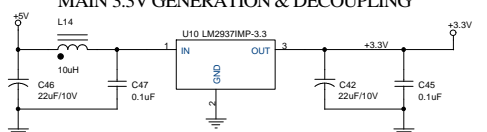
AD31_01



ICE1712 - DECOUPLING



MAIN 3.3V GENERATION & DECOUPLING



NOTE:
SOT-223 Package
Tab is Ground